

INSTALLATION GUIDE

Horizontal & Angled Poles



CATASTROPHIC
CREATIONS

First, find your Pole selection

Since we have many options for these Poles, it would have been difficult to build out instructions for each configuration. Instead, here we explain the processes for both a Horizontal and an Angled Pole, so keep in mind that where they connect to the wall will change depending on which option you have. Below we have listed wall specs for each Pole length.

Any Questions?

If you have any questions with installation, please feel free to give us a call or shoot us an email.

 (616) 583-8143  support@catastrophiccreations.com



Horizontal Pole Wall Specifications

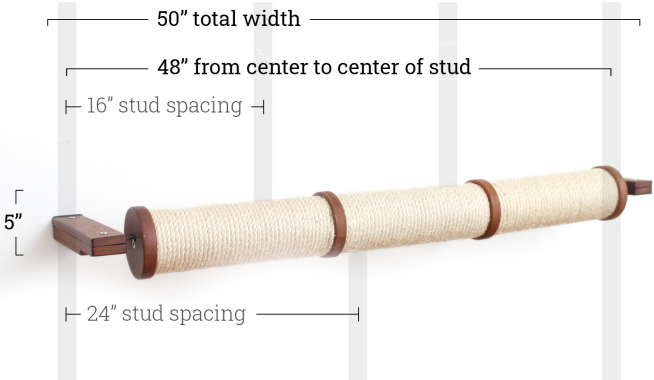
Please keep in mind that if you got a double Pole, the wall specifications will remain the same. Any of the Poles can be installed into a single stud as long as you use the included Drywall Anchors with the other Mounting Plank.

2-Tier Horizontal Poles

connect along 3 studs spaced 16" apart.

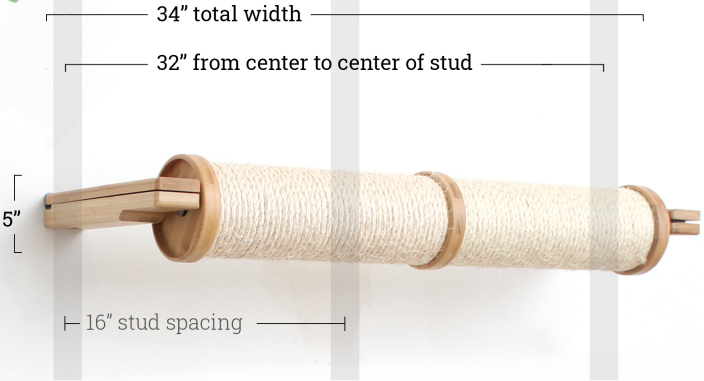
Wall Compatabilty
16" & 24" stud spacing

- ☒ 16" stud spacing - 4 studs
- ☒ 24" stud spacing - 2 studs
- ☒ Cement & Brick



Wall Compatabilty
16" wall stud spacing

- ☒ 16" stud spacing - 3 studs
- ☐ 24" stud spacing
- ☒ Cement & Brick



3-Tier Horizontal Poles

Can be installed along either 24" or 16" stud spacing.

Angled Pole Wall Specifications

Please keep in mind that if you ordered your pole with a Hammock, you will need an additional stud. This is explained more clearly when you continue on to the instructions.

✓ **Any of the Poles can be installed into a single stud** as long as you use the included Drywall Anchors with the other Mounting Plank.

1-Tier Angled Poles

connect along two studs spaced 16" apart.



2-Tier Angled Poles

connect along two studs spaced 24" apart.



3-Tier Angled Poles

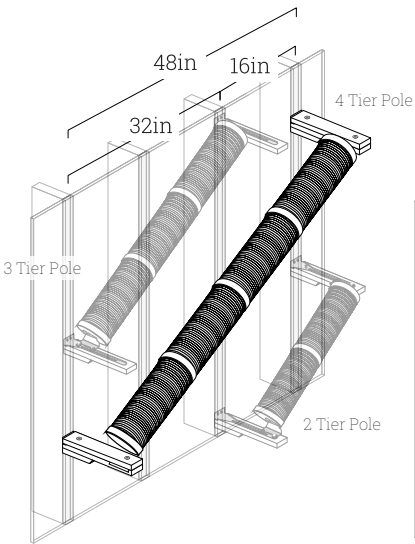
connect along three studs spaced 16" apart.



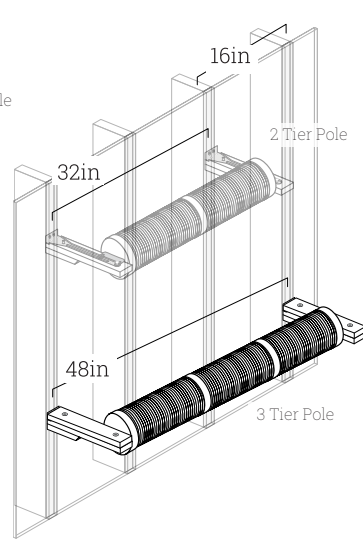
4-Tier Angled Poles

connect along four studs spaced 16" apart or three studs spaced 24" apart.

4-Tier Angled Scratching Pole



3-Tier Horizontal Scratching Pole



Before you Start

These instructions show 4-Tier and 3-Tier options mounted along 16" stud spacing. These options can also be installed along 24" wall stud spacing using three studs instead of four. Each Pole type has multiple lengths so pay close attention to the number of studs your Pole needs according to the diagram above.

Mounting into Drywall

As long as one mounting point is installed into a wall stud, you can install the other point using the included drywall anchors. You will need to pre-drill pilot holes using a 1/4" drill bit to install drywall anchors. The anchors can be used with the two top bracket holes.

Measuring Tape

Electric Drill

Stud Finder

Pencil

1/4" Drill Bit (If using Drywall anchors)

2x Drywall Anchors

1x 1/8" Drill Bit

1x Philips/Hex Bit

1x M5 Allen Wrench

Top Mounting Screws
 4x Standard Pole
 6x Pole w/ Hammock

Bottom Mounting Screws
 2x Standard Pole
 3x Pole w/ Hammock

10-24 Furniture Bolts
 4x Standard Pole
 6x Pole w/ Hammock

1x M4 Allen Wrench (included with Angled Pole)

Mounting Planks
 2x Standard Pole
 3x Pole w/ Hammock

Plank Tops
 2x Standard Pole
 3x Pole w/ Hammock

1x Level (Included for Pole w/ Hammock & Horizontal Pole.)

Pole Bolts
 2x Standard Pole
 4x Double Pole

Pole Sections
 The number of Pole Sections you receive will depend on overall length of pole.
 (e.g.) 1-tier Pole = 1 Pole Section

Pole Caps
 2x Per Pole

Threaded Rods & Connectors
 Pole sections are connected with a Threaded Rod and Pole Connector.
 (e.g.) 3-tier Pole = 2 of each part.

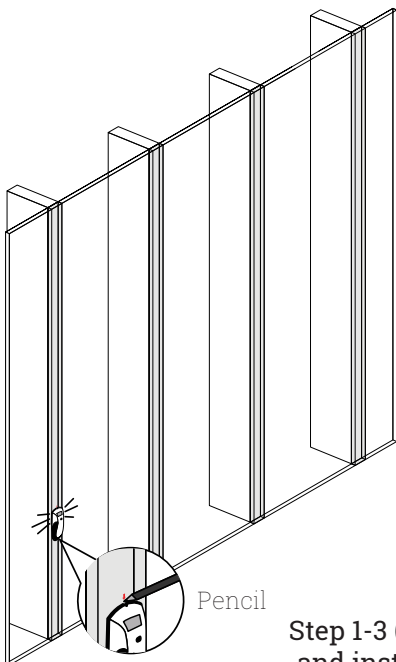
3 or 4 Grommet Canvases
 Included if you ordered the Hammock option. 3 Grommet sections fit 16" studs and 4 grommet sections fit 24" studs.

Angled Pole Brackets
 2x Standard Pole
 4x Double Pole

Horizontal Pole Brackets
 2x Standard Pole
 4x Double Pole

1

Use a stud finder to locate your studs and mark their location with a pencil or painter's tape.



Pencil

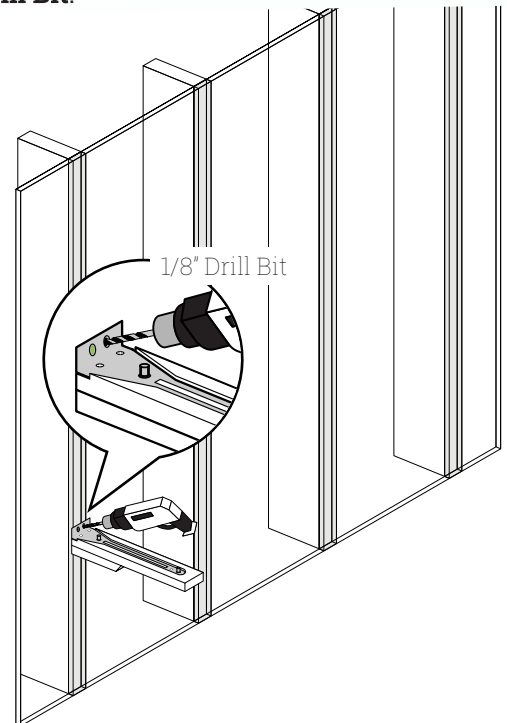
Video Guide

Step 1-3 (Finding a stud and installing a plank)



2

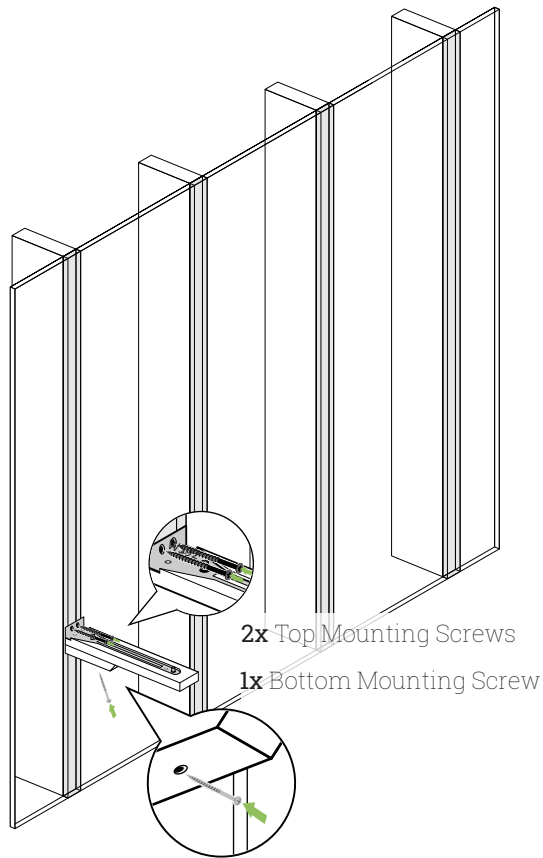
Hold a **Plank Bottom** centered on your desired wall stud and pre-drill holes with the included 1/8" Drill Bit.



1/8" Drill Bit

3

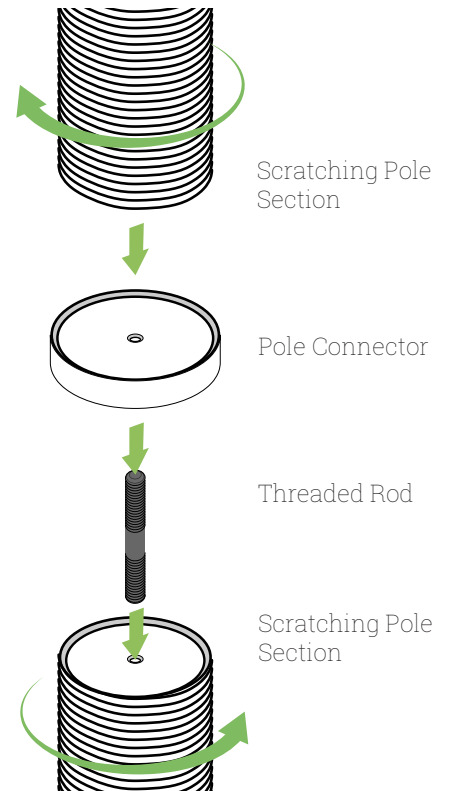
Install two **Top Mounting Screws** in the **Plank Bracket** and a **Bottom Mounting Screw** through the underside of the **Plank** to hold it securely in the wall.



4

Assemble each of the **Pole Sections** by screwing them together with a **Threaded Rod** and **Pole Connector** between each section.

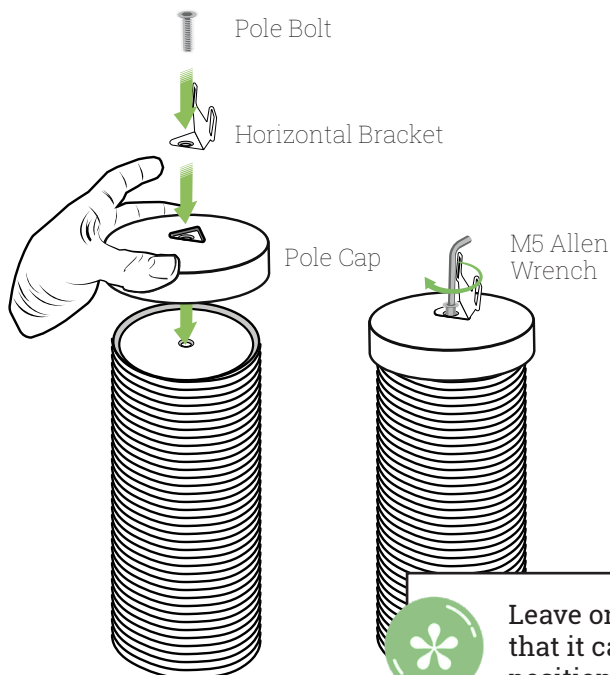
Be sure to fully tighten each section, or poles will unsafely rotate once your cat hops on.



5

Horizontal Pole

Install one **Pole Cap** by placing it on the end of the **Pole**, placing a **Horizontal Bracket** in the inset area, and screwing the **Bracket** and **Pole Cap** into place with a **Pole Bolt**, using the **M5 Allen Wrench**. Repeat for the other **Pole Cap**.*

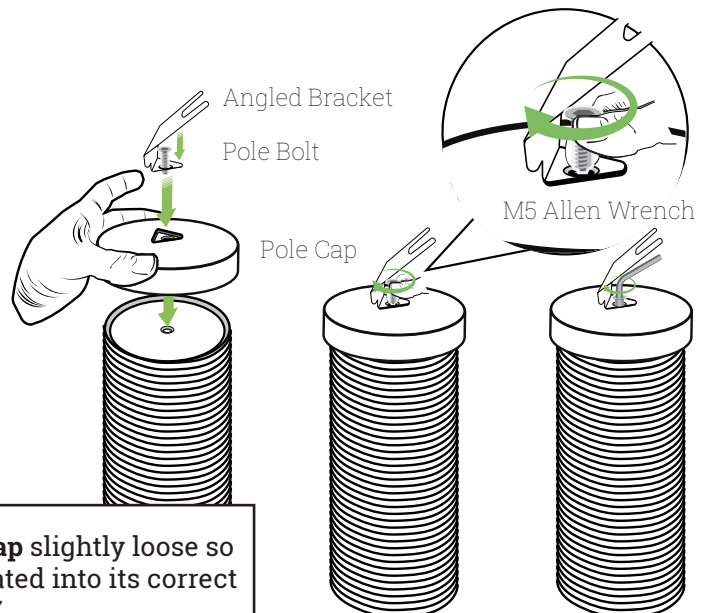


5

Angled Pole

Install one **Pole Cap** by placing it on the end of the **Pole Section**, placing an **Angled Bracket** in the inset area, and screwing them into place with a **Pole Bolt**, using the **M5 Allen Wrench**.

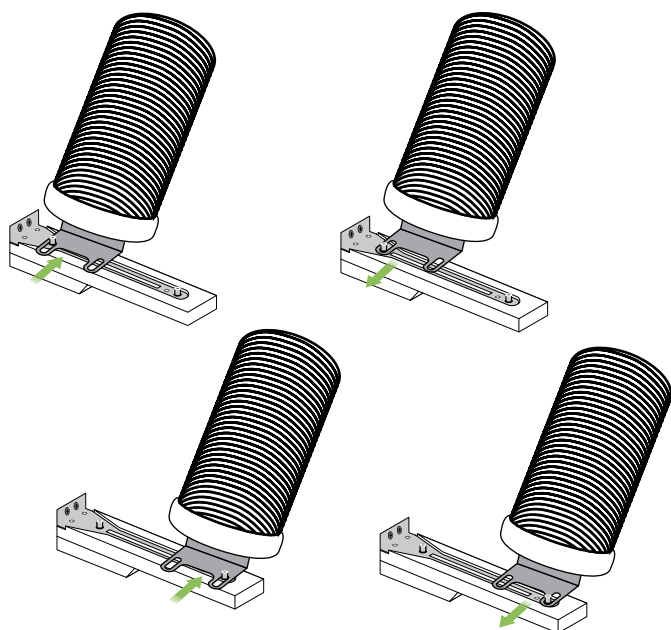
Because of the odd shape of this bracket, it's easiest to start the **Pole Bolt** by hand, then tightening with the **M5 Allen Wrench**. Repeat for the other **Pole Cap**.*



Leave one **Pole Cap** slightly loose so that it can be rotated into its correct position in Step 7.

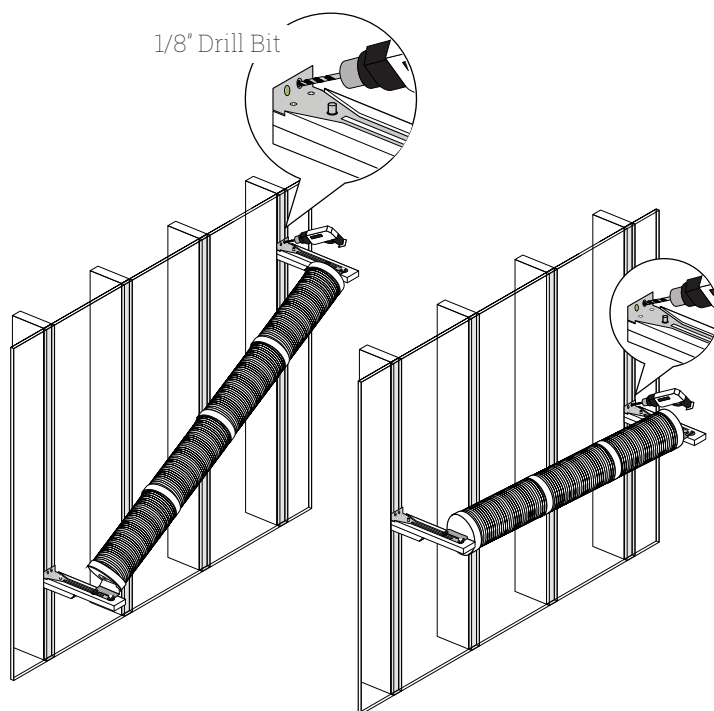
6

Poles can attach to the front or the back of the **Plank Bottoms** and have a slide that gives you extra flexibility to reach a stud.



7

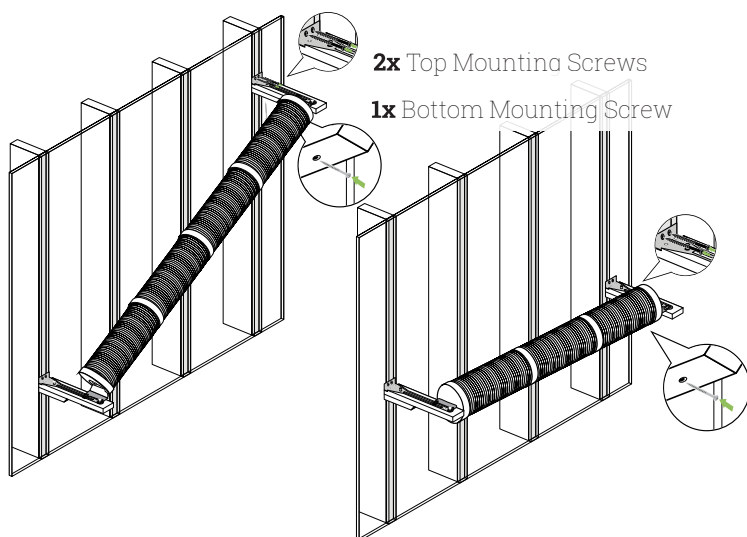
Place the side of the **Pole** that has been fully tightened onto the installed plank. Hold the second **Plank** up to the other end of the Pole and rotate the Pole Bracket to line them up properly. Tighten bracket to secure it's position.



Use **1/8" Drill Bit** and driver to pre-drill holes in the two Bracket holes in the unmounted Plank.

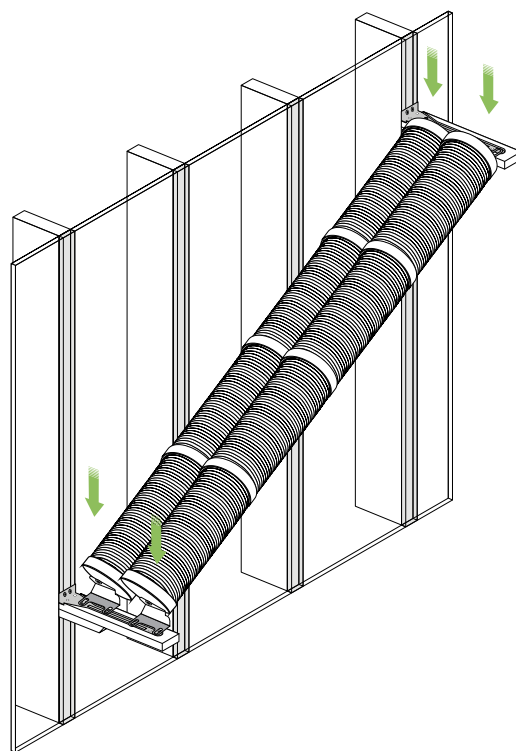
8

Install two **Top Mounting Screws** in the Plank bracket and a **Bottom Mounting Screw** through the underside of the **Plank** to hold it securely in the wall.



9

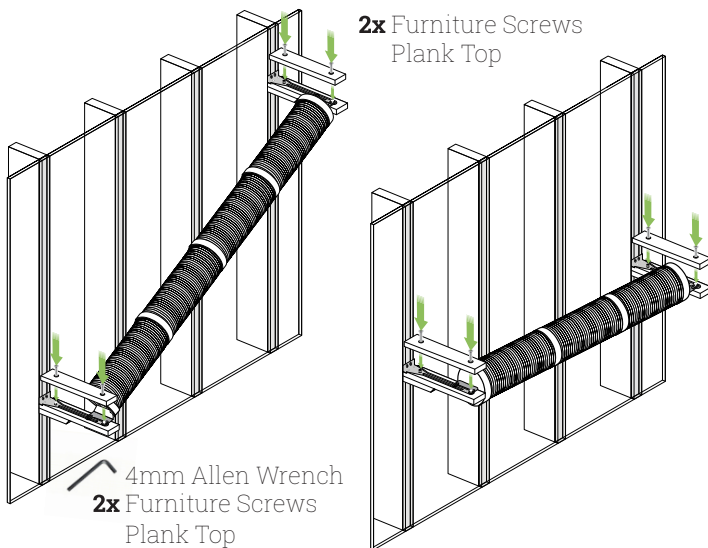
If you have a Double Pole, install the second Pole beside the first one.



10

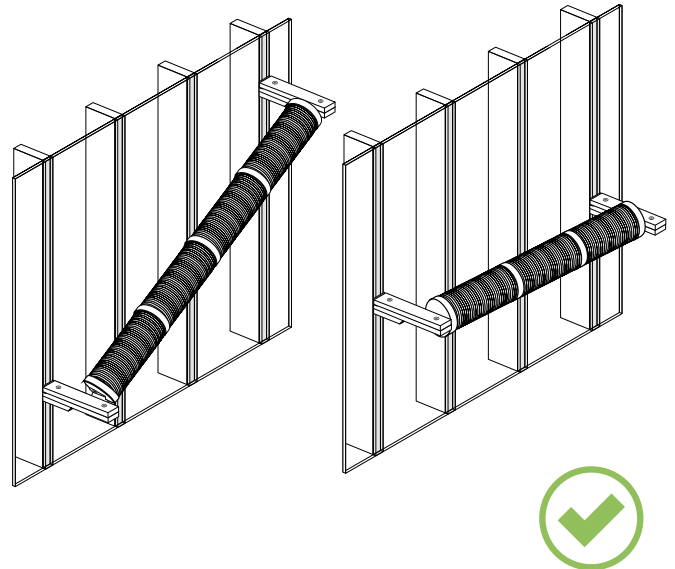
Place **Plank Tops** on each **Plank Bottom** and install four **Furniture Screws** with the **Allen/Phillips Bit**.

For the bottom Mounting Plank, it's easiest to use the included **M4 Allen Wrench**.



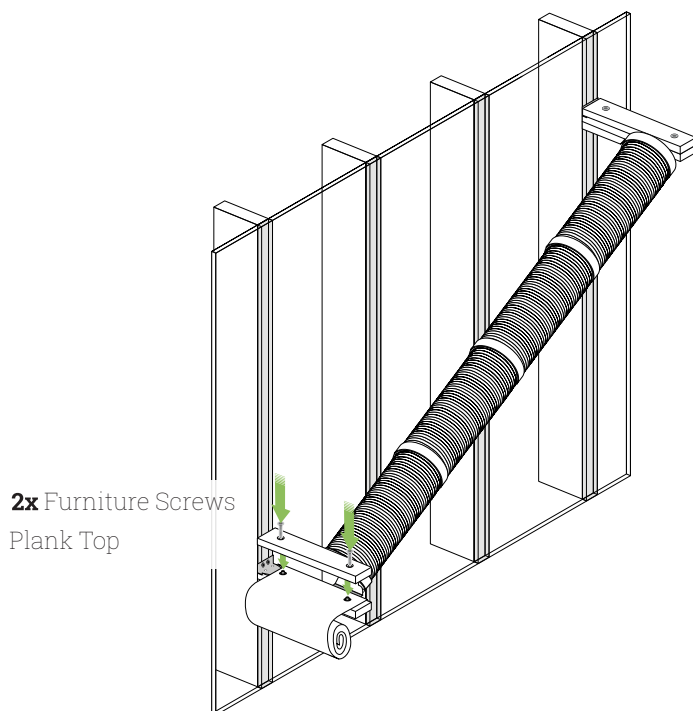
11

Installation is complete for a standard pole. If you ordered the option with a **Hammock**, continue on to step 12.



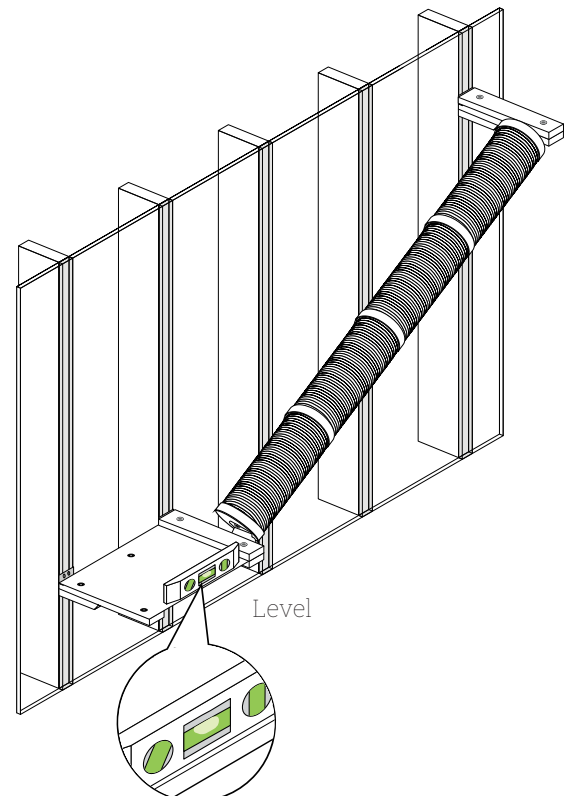
12

To add a **Hammock** to either end of the **Pole**, simply remove a **Plank Top** and place one end of the grommeted fabric over the metal posts in the bracket, then re-install the **Plank Top**.



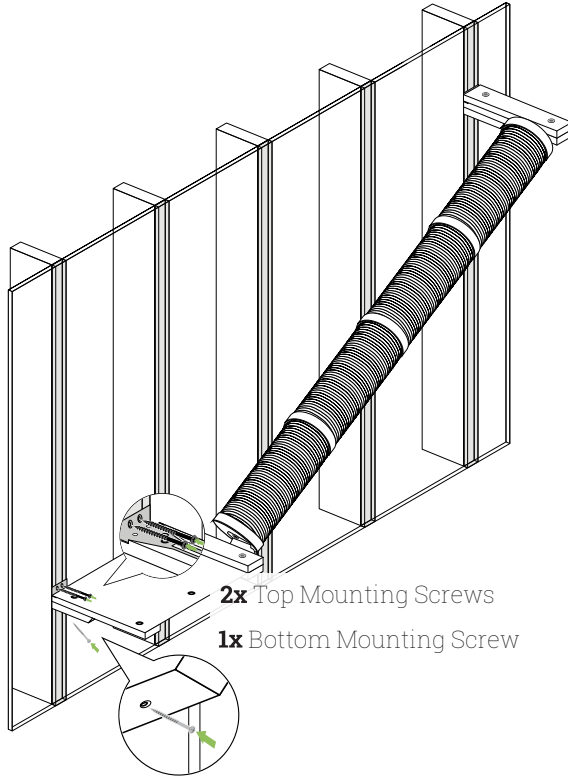
13

Hold the last **Plank Bottom** with the bracket posts lined up to the last set of grommets on the **Fabric** and pull the fabric taught. Use a **Level** on the **Fabric** to find the correct height.



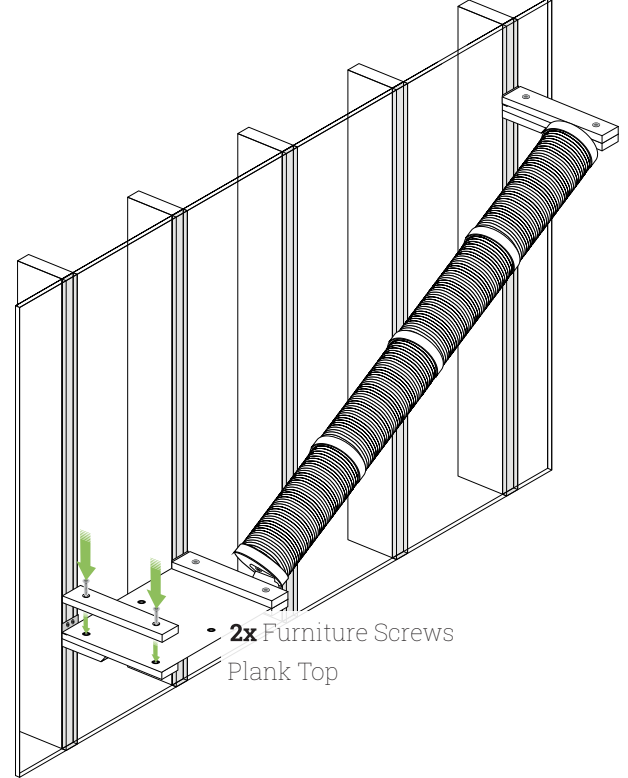
14

Install two **Top Mounting Screws** in the **Plank Bracket** and a **Bottom Mounting Screw** through the underside of the **Plank** to hold it securely in the wall.

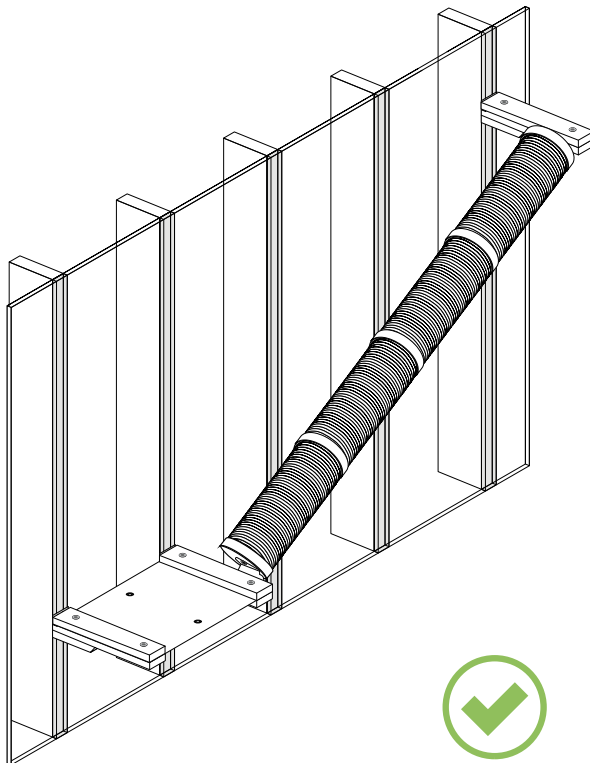


15

Place **Plank Tops** on each **Plank Bottom** and install two **Furniture Screws** with the **Allen/Phillips Bit**.



16



Scan QR code

for additional installation
resources & videos



Get in Touch!

(616) 583-8143

support@catastrophiccreations.com

Customer Service Available
Monday- Friday
Hours: 8am-4pm EST